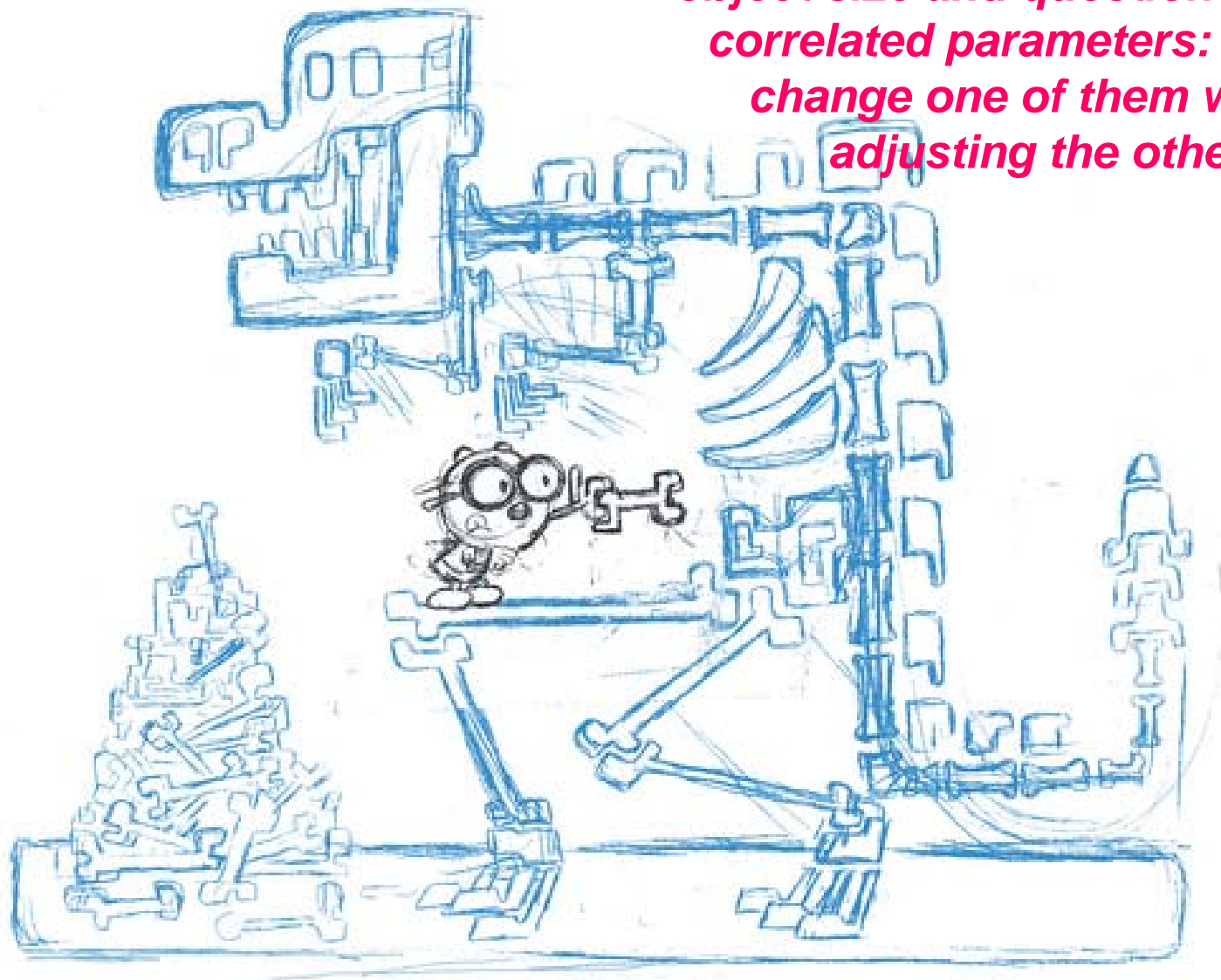
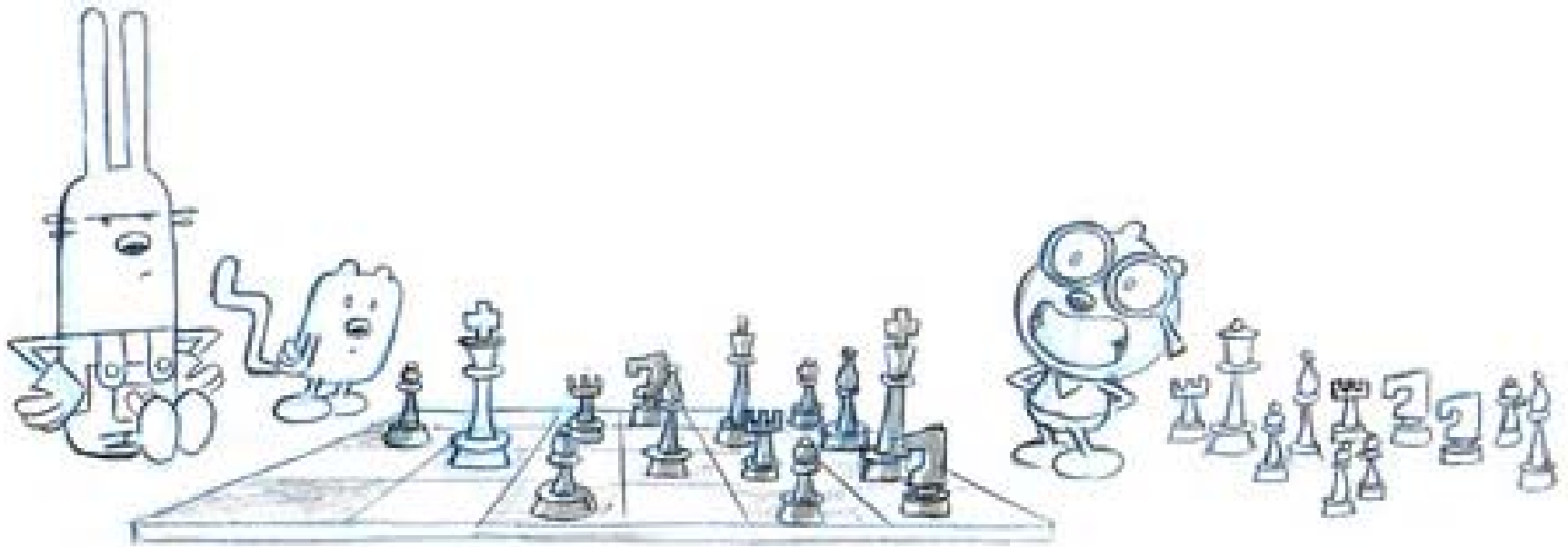


For archaeologists, space's scale, object's size and question's type = 3 correlated parameters: we can't change one of them without adjusting the others.

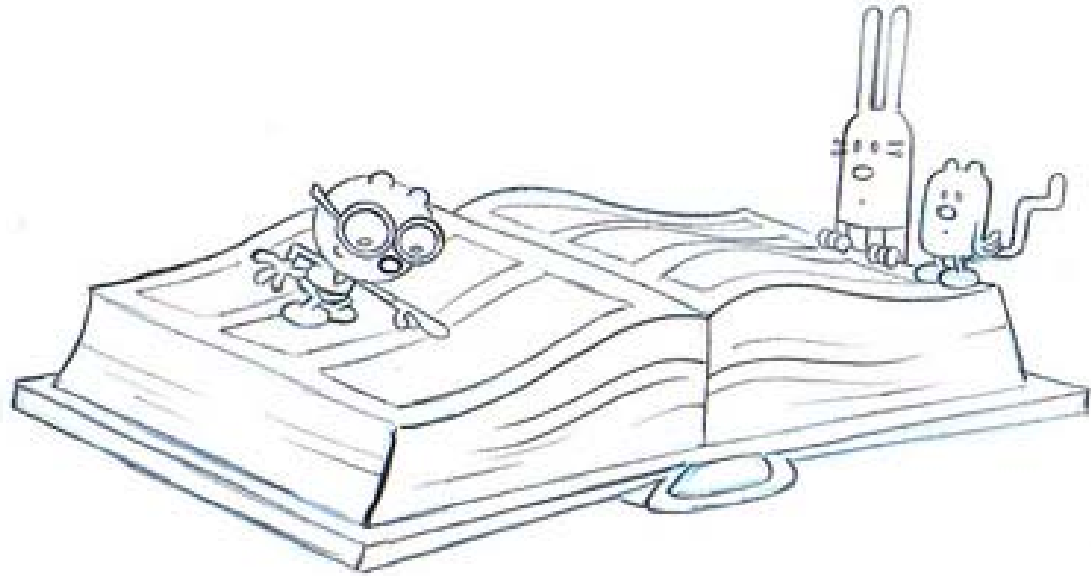




In another hand, archaeologists have also to consider the precision of spatial datas before settle their playing tools.

For other scientists (architects for example) space' scale jibes different concepts . We may be able to understand them.





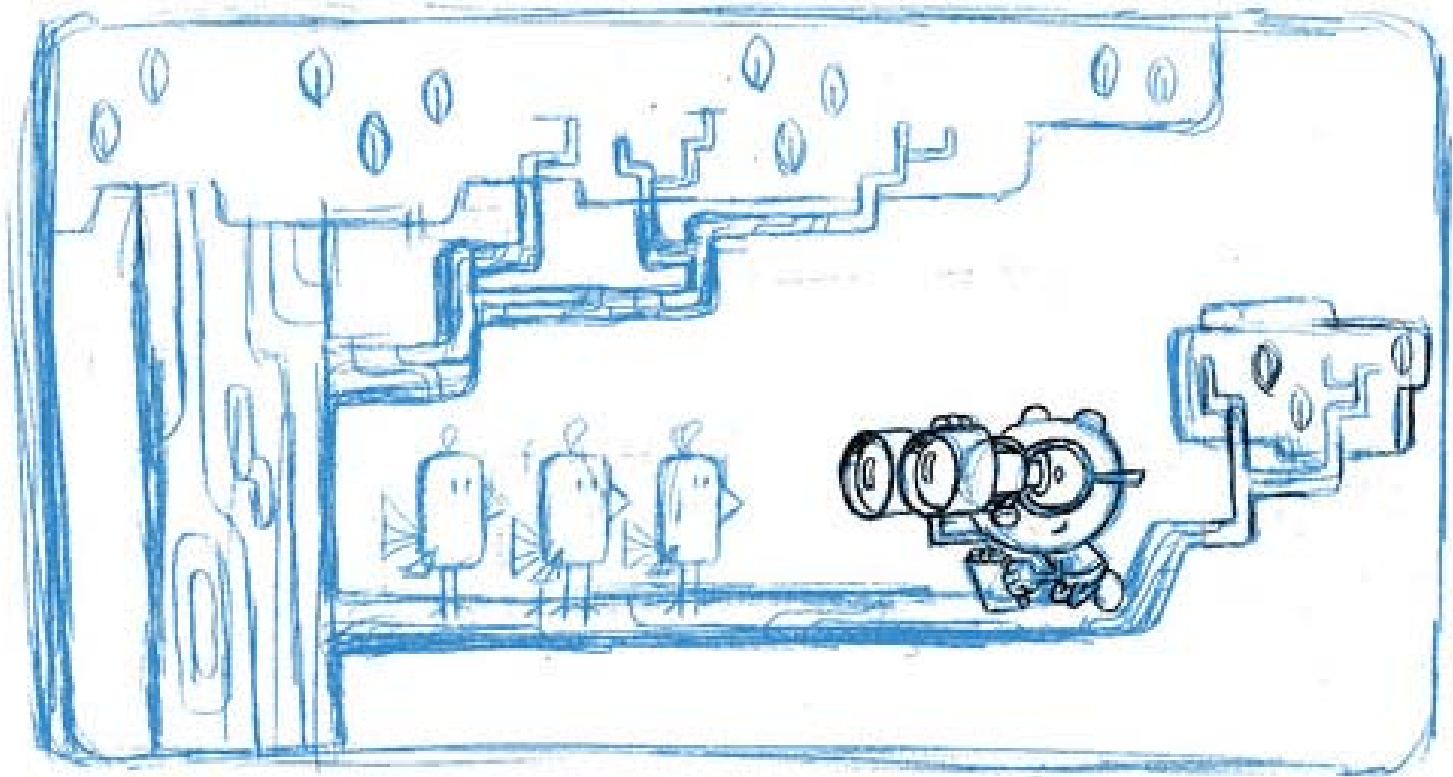
Time is the most important framework for archaeologists: we use it to rank our data, our concepts, our contexts. We all know that the resolution of that grid is related to the data's precision.

But we can't stay in our fish bowl and do not take into consideration other ways to comprehend the time: past' men perception, other scientists' perception, etc...



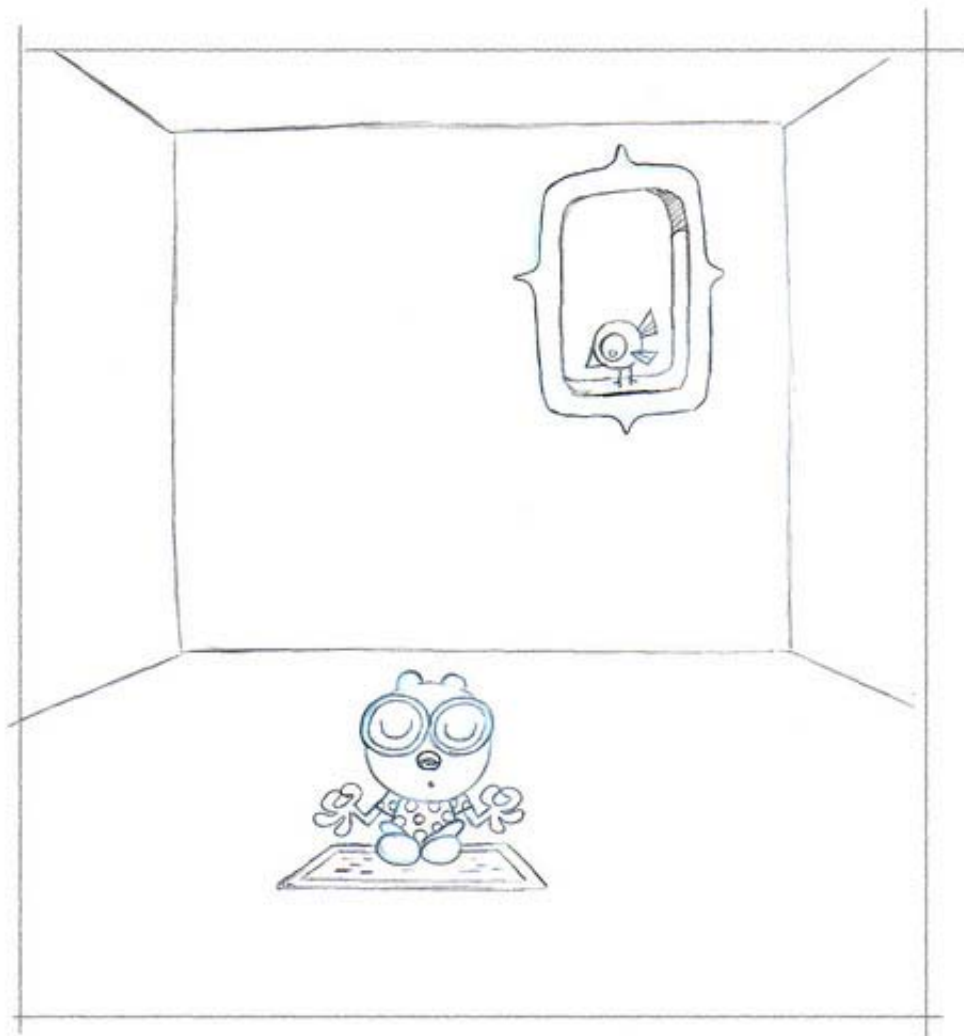
*More over, just like space, time has 3
different archaeological scales:*

Small



Big





And Medium...

***...Wich is, for archaeologists,
the most strenuous to
manage. So let's try not to be
disturbed by that level and
keep as quiet as possible !***